

Pontesbury Parish Newsletter

January 2023

Issue No: 293



Happy New Year
it's Panto time
... oh yes it is!

Contents:

Pg 2 - Parish Council News
Pg 3 - What's On @ The Pavilion
Pg 4 - Friends of Pontesbury Library News
Pg 4 - January in the Library
Pg 5 - Pontesbury & Rea Valley Community Good Neighbours News & Events
Pg 6 - Pontesbury WI
Pg 6 - Just One Thing - No 10
Pg 6 - Hedge & Tree Planting
Pg 7 - Foodbank News & Getting Support in Pontesbury / Warm Welcome Events
Pg 8 - Safer Speed Shropshire Update
Pg 8 - Pontesbury Women's Club
Pg 8 - A Warm Welcome @ Heat Hub
Pg 8 - Tree Festival Thank You
Pg 9 - Church Service Dates & Times
Pg 9 - Lingen Davies Snowdrop Walk
Pg 9 - Westbury Flower Club Dates
Pg 10 - Pontesbury & Rea Valley u3a
Pg 10 - Longden Tennis Club
Pg 10 - Chip It For Charity Date
Pg 11 - Join Pontesbury Parish Council
Pg 12-15 adverts
Pg 16 - Dates for your diary—
please send in all event dates for diary to
deputy@pontesburypc.org.uk

**Closing Date for the February 2023 edition is
10th January 2023**

Please email contributions to
deputy@pontesburypc.org.uk or hand into the
Pavilion.

Advertisers, please contact
deputy@pontesburypc.org.uk for details on how to
place your advertisement

Pontesbury Parish Council News

One of the things considered at the December meeting was the setting up of a Rural Watch scheme.

As part of the West Mercia Police, Rural Matters campaign to tackle crime in rural areas, Rural & Business officers have launched a new watch scheme initiative across Shropshire.

Rural Watch has been specifically designed for residents in rural areas. The objective is to encourage members of the public to be more vigilant and to share and report information regarding any suspicious circumstances or crimes sighted within their community with other residents and their local policing teams. The benefit of a watch scheme is the intelligence gathered and reported by the local community. Good intelligence can aid investigations and potentially result in disrupting criminals, such as seizing a vehicle with no insurance or the effective use of police powers of stop and search. The public know the communities they live in better than anyone, and will usually notice suspicious behaviour. Without the reporting of suspicious circumstances or crimes, it is difficult for the police to identify or tackle problem areas. We are hoping to hold a public meeting early in the New Year to discuss such a scheme. If you are interested in attending please contact the Clerk: clerk@pontesburypc.org.uk

Councillors also received an update about the ANPR scheme and you will see an article about this elsewhere in the newsletter. Councillors received a report about the decrease in the average speed through the parish and feel it has been a successful partnership project with neighbouring parishes.

There is still a vacancy for the Pontesbury ward of the parish council following the resignation of Cllr Lynette Charles. If you would be interested in becoming a councillor please contact your local councillor or the Parish Clerk. Further useful information about what is involved in being a councillor can be found on the parish council website www.pontesburypc.org.uk

The next parish council meeting will be held on Monday 9th January 2023, 6.30pm at The Pavilion.

The next Planning Committee meeting will be held on Tuesday 3rd January 2023 at 6.30pm at the Pavilion. Please contact Deputy Clerk deputy@pontesburypc.org.uk if you would like to attend and/or raise any issues.

If you wish to comment on a planning application please use the Shropshire Council planning portal at <https://pa.shropshire.gov.uk/online-applications/> or pass your comments through Cllr A Hodges at ahodges@pontesburypc.org.uk. All new planning applications for the area are listed on the parish council website.



Cost of living help

Increases in the cost of food, fuel and utilities is affecting many households in Shropshire and we know that it is a worrying time for everyone.

To help, we have brought together a number of useful links, tips and pointers on where and how people can find help across the county.

(www.shropshire.gov.uk/cost-of-living-help/) and also www.shropshire.gov.uk/cost-of-living-help/cost-of-living-checklist/

This will help people see the range of services we and our partner organisations have on offer. This includes a benefits calculator so that people can check whether they're getting the benefits they're entitled to, advice about energy bills and reducing energy costs from the Marches Energy Agency, as well as information about how to manage debt from Citizens Advice.

To find out more about energy bills updates that you may be entitled to, please have a look on our website (<https://www.shropshire.gov.uk/council-tax/energy-bills-rebate/>).

Anyone worried about their bills or staying warm at home can also call Marches Energy Agency on 0800 112 3743 or email advice@mea.org.uk



Pavilion News

January 2023

Happy New Year!

What's On in January?

Start the new year with a new creative project and join us for the 'Get Creative group' on:

5th January 2023 at The Pavilion

We look forward to seeing you - it's free!

If you have any wool/needles, patterns or other craft materials that you would like to donate for this group, please bring them to The Pavilion any morning of the week. Thank you



Carer's Support Morning - Friday 27th January 2023 - from 10.30am

Shropshire Council, Age UK STW, Alzheimer's Society and Pontesbury Parish Council are working together to support carers in and around the parish. Everyone is welcome to attend and we aim to bring information you, the carer, wants to know about. At the January meeting the Anticipatory Care Project will be coming along to speak to everyone.

What is anticipatory care? Anticipatory Care Planning (ACP) is where you talk about what matters most when making plans for care in the future. You can talk about this with those close to you, and your doctor, nurse or care worker. Your care team want to know what's important when they're planning treatment and care with you and your loved one.

You can get in touch with Celia McIntyre at Shropshire Council Carer's Team to let us know if you there are any other topics you would like to hear about; you can also let Celia know if you need to bring along the person you care for - there is usually an activity in a separate room for them. [celia.mcintyre@shropshire.gov.uk]



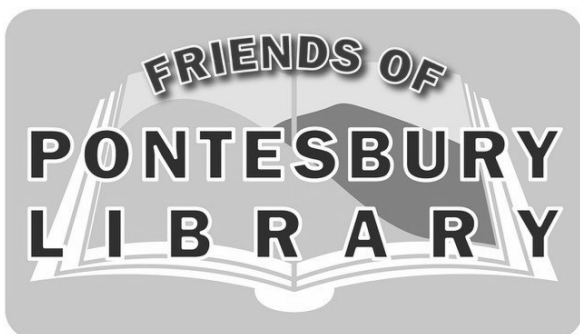
The Sea Change Trust Family Drop-in is back in the Pavilion on Wednesday 4th January from 10am to 12 noon.

A free activity session for parents and children under 5. Come and join us for some crafty fun at The Pavilion Community Hub And Library in Pontesbury. Meet other families, and have a talk with our team over a hot drink - a free event.

Babies and under 5's are very welcome.



Looking to hire a room, the Pavilion has rooms, large and small to hire. Please contact Anna Lawson, admin@pontesburypavilion.co.uk or call in for a chat.



News from the Friends of Pontesbury Library

At the Library Fund draw made at the mince pie coffee morning in December, the lucky lottery winners were:
1st Wendy-Jane Walton; 2nd Mrs Pat Fear; 3rd Doreen Thomas

The next Lottery draw will be made at the coffee morning on 7th January.

The Mood Indigo Concert is too late for the newsletter deadline, but promises a very entertaining evening, and a boost for Library funds.

A message from Colin Sharp, Chair of the Friends of Pontesbury Library:

"I'd like to thank community members for their continuing support throughout the year as we look towards 2023. This helps justify why there must be a library in Pontesbury.

Coffee mornings for the Library Lottery Fund draw on the first Saturday of each month have been a great success. To name but a few ... Valentine Quiz, Jubilee celebrations, guess the weight of a pumpkin and even a surprise visit from Santa Claus!

The Annual Plant Sale raised over £1,300. A big thank you to all involved. Every Pontesbury Primary pupil visited the library for a morning during the Spring and Summer terms, encouraging reading for pleasure. This scheme will hopefully continue into 2023. FOPL also supports Rhyme Time for 0 – 3s beginning Thursday 12 January 2 - 2.45pm.

Donations from the Coop Local Community Fund of nearly £3,000 have allowed us to develop the patio garden area further plus over £2,000 is earmarked for a hearing loop and more comfortable seating for readers. 2023 starts on Saturday 7 January with Chip It for Charity (see posters).

In these challenging times a free library and resource centre on our doorstep is something we can all be proud of. However the Council's support for Libraries cannot be taken for granted. We still need to raise funds. We'll do this through our events in a spirit of entertainment and fun for the community as we look forward to 2023."

Colin Sharp, Chair FOPL



January in the Library

Marcus Sedgwick, who died suddenly aged 54 on 15th November 2022 was a passionate writer of books for mainly children and young adults. He was also a teacher of creative writing, working for a charitable foundation. He had recently published handbooks for children, which through a friend, he kindly signed and donated to Pontesbury Library. We will be having a special collection and display of his work this month. He has been described as '*A great writer but, above all, a wonderful human.*'

If you are making New Year resolutions, why not make one to join the library! I'm sure if you have never visited the library or Pavilion you will be surprised at what we have to offer, books, a small book sale, books online, newspapers and magazines online, photocopier, public computers with printing facilities. We also have friendly staff that can find out nearly everything.

Rhyme Time will be on 12th January at 2pm till 2.45, tell your friends and family. It is lovely to see lots of children marching round the library to the 'Grand old Duke of York'. The monthly event is suitable for babies and all pre-school children.

Wishing you a Happy 2023, The Library Owl





**Community
Good
Neighbours**
Pontesbury & Rea Valley District

News & Events

January 2023

13th January 2023

Coffee Morning

10:30am to 12:00pm - Plough Inn

All are welcome to come along.

For all upcoming events please view our Facebook page for all updates.



Pop up Larder with

Coffee Morning will be

Friday 27th January

2023 at Minsterley

Parish Hall 10 till 11.30.

Our grateful thanks go to the Whittall family for the very kind donation to Pontesbury and Rea Valley Good Neighbours in remembrance of Joyce Whittall.

Luncheon Club

The first Monthly Luncheon Club event took place in October which was a roaring success, with 31 people enjoying a superb hearty two course hot meal, for only £5. In November we cooked a Christmas dinner for 52 people and entertainment was provided by Tony Hughes.

We would like to welcome our volunteer 'chef Jolly' without whom this event would not have been possible and all the volunteers who cooked and peeled, washed up and helped out..... we are always looking for help even if its just to wash up for an hour. Please ring our number to offer your help - Our the next luncheon club will be held on the 20th January 2023, this was so well supported that it is now fully booked, unfortunately can only cater for fifty people.

We would like to thank Age UK and the Public Hall for their continuing support to enable us to run this event.



Next Luncheon Club on Friday 20th January 2023 in The Public Hall

A hearty meal will be served, for which a small charge will be made towards the running costs, and a chance to socialise and meet your neighbours and others from the local community.

Pontesbury WI

Pontesbury WI has had a very busy December. Firstly we decorated the tree for St George's Festival of Trees and Cribs. Every member of the W.I. decorated a Christmas gift for the tree celebrating the gift of friendship. Our next event was our monthly craft Club. At the club we made tree decorations using wooden cookies. We had a stall at the German Market held at the Plough. It was lovely to see everyone enjoying themselves purchasing all the Christmas items on sale.

Our monthly meeting on the 12th December saw our W.I. members being entertained by the Shrewsbury Bell Ringers. All twelve members were present playing lots of Christmas carols as well as some beautiful favourites such as "Walking in the Air".

This month as it is nearly Christmas we held a competition to make a Christmas Table Decoration.. The Bell Ringers decided Lena Rowson was the worthy winner.

Maxine Pittaway won a lovely Christmas plant in the raffle. She also won the Ethel Morris Carving and a voucher for winning the most single stem of the month competition throughout 2023.

Our next meeting will be held on the 9th January 2023 at 2pm. Our guest speaker at the meeting will be Gill Castle who will talk about Bargain hunt.

New members are most welcome to join us. If you would like to join the W.I. please contact Irene Windows President on 01743791903 for further information.

Maxine Pittaway Events Organiser.



theWI
INSPIRING WOMEN



JUST ONE THING.....to help save the planet

Tip No. 10 Reduce Food Waste

At this time of year it is easy to have left over food in your fridge. Why not make a bread and butter pudding, or bake some scones or fry some bubble and squeak.

Millions of bread slices are binned, 5.9 million glasses of milk are poured down the sink, and millions of potatoes are discarded each year.

Look at the www.lovefoodhatewaste.com website for ideas & recipes.



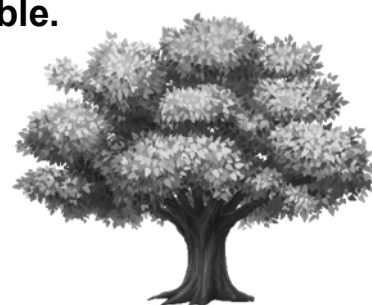
Pontesbury Climate Emergency Action Group

Hedge and tree planting - help needed on 16th January in Pontesbury. Meet at 10:00am at the Pavilion. Please bring a spade if possible.

We need more trees and wildlife habitat in Pontesbury!

Please come along on 16th January, and bring a friend too to join us planting hedgerows and trees in the village. No experience necessary.

Refreshments will be provided after the planting.



Getting Support in Pontesbury

The Rea Valley Foodbank – sharing and caring within the community (in partnership with Shrewsbury 'foodbank PLUS')

This is being written in early December and our teams are looking forward to the week leading up to Christmas when 550 hampers will be packed at The Barnabas Church Centre, Shrewsbury, many of which are destined for Rea Valley households. What an amazing accomplishment and only achieved by the huge generosity and kindness of people in the Rea Valley community.

THESE ARE UNPRECEDENTED TIMES

Many household budgets are already under huge pressure. Sudden illness, a delay in benefits, a large unexpected repair bill, etc, can easily cause a financial crisis. We can bridge the gap until your circumstances improve by providing a weekly parcel of nutritionally balanced food.

Throughout the county of Shropshire, many people are keen to share with others and here in the Rea Valley it's no exception. The giving is so generous - we are immensely grateful to those who donate and we're here to pass that support on to those who could do with a bit of extra help.

You do need a referral but just call: Reverend Greg Smith 07902 794653
 Reverend Richard Lonsdale 07922 830488

and you will be warmly welcomed by our team when you come to your collection point.

Holy Trinity Church, Minsterley Tuesdays 10am-12.00
St George's Church, Pontesbury Thursdays 10am-12.00

We owe huge thanks to Shrewsbury Foodbank Plus for providing the storage space we need for our donated food and the start-up help they have given us. They are currently donating food to our own collections to ensure a balanced diet in the food parcels.

Financial donations are hugely welcome and enable us to buy items we run short of. Here are the account details:

The Rea Valley Foodbank / Sort Code: 51-61-06 / Account No: 76841804 / The reference is: Donor

If you would like more information then please email: support@reavalleyfoodbank.co.uk

Shropshire Carers: We are pleased to share with you our new Winter Wellness Guide 2022. Full of information, all in one place. We hope you find this useful - please take a look via the link below: <https://shropshire.gov.uk/shropshire-choices/caring-for-someone-else/>



On a low budget? Want to save money

Visit shropshirelarder.org.uk to find out about low cost or free food and help with debt, benefits, housing and more in Shropshire.

Rea Valley Community Good Neighbours

For Food Parcels, Pop-Up Larders, Luncheon Club and help with prescription deliveries:

Call: 07944 891953 for a confidential chat



Keep Shropshire
Warm

0800 112 3743
advice@mea.org.uk

Anyone worried about their bills or staying warm at home can call Marches Energy Agency on 0800 112 3743 or email advice@mea.org.uk

A Warm Welcome during the cold winter months. Each morning of the week through December & January, there is a warm building open where tea and coffee (and perhaps a little more) will be served. There is no charge for this and people are welcome to pop in for a short time or the whole session. Venues are open for this as follows:

Mondays 10-12 The Pavilion
Tuesdays 11-2 Pontesbury Baptist Church
Wednesdays 10-12 Congregational Church
Thursdays 10-12 St George's
Fridays 10-12 St George's

Any queries to Greg at rectorpontstip@gmail.com or 07902 794653 or to the venue in question

Safer Speed Shropshire

The Safer Speed Shropshire Automatic Number Plate Recognition (ANPR) speed camera scheme has been running successfully since August, recording the movements of nearly quarter of a million vehicles per month, 24 hours a day, 7 days per week. This scheme has been set up as a joint project by the parish councils of Hanwood, Pontesbury and Minsterley, alongside the West Mercia Police, and helped by a grant from the Police & Crime Commissioner.

The three parish councils are thankful for the expert assistance of Charles Pedrick, who has set up and run a similar system in Gloucestershire.

Every week, a report is downloaded from the camera and several letters are sent out by West Mercia Police. Currently these are averaging 2 letters per camera every day, as well as visits from local police officers to educate drivers about their driving habits. Repeat offenders will be identified for further action, which could include confiscation of the vehicle.

There have been some astonishingly dangerous drivers identified as well as many who think it is OK to be a few miles per hour over the 30mph limit. Many of these offences have been happening at times when children could be walking to school, when people are walking into church, or when customers are leaving the public houses or shops.

The good news is that, over time, the number of high-speed offences is reducing, allowing us to concentrate on the drivers who are over the limit by a smaller margin. The average speed of drivers in general has reduced since the cameras were installed.

The way that we analyse the ANPR results also has the additional benefit of identifying cars that have no road tax or MOT. These drivers will be dealt with for their speeding, but also for not keeping their car fit for the road.

Over time, the aim will be to add additional cameras to the existing ones in Hanwood, Pontesbury and Minsterley. This will allow more automation, as well as measuring average speeds of vehicles passing along the A488.

We must thank all those drivers who drive at safe and sensible speeds through the villages; when you drive through the villages at 30mph or less, you are slowing other traffic down and making our part of Shropshire a safer place to drive, ride and walk through.

Pontesbury Women's Club

Tuesday 10th January

Marion Micklewright from Shrewsbury Cat Rescue will tell us about her work

Tuesday 14th February

Barbara Davis will lead us for a Craft Evening on a Valentine's Day theme

PWC meets at 7.30pm on
The second Tuesday of the month
At Pontesbury Public Hall
Visitors and New Members are always
welcome

A Warm Welcome at the HEAT HUB

Every Tuesday 11 – 2 pm
Pontesbury Baptist Church
Chapel Street, Pontesbury, SY5 0RJ

A warm welcome and a safe place this winter!

Hot drinks and refreshments free of charge / Free Wi-Fi / Games & Magazines / Children's toys / Easy Access / Toilets available

All welcome!
More details at:
www.pontesburybaptist.co.uk

Tree and Crib Festival A very big Thank You to all those people who supported the Tree and Crib Festival, it has once again been a great success. It has been a beautiful Festival & the entries have been so brilliant showing the theme - a real happy anniversary celebrating 25 years.

The theme for next year is LOVE. There will be some changes with those 'in Charge' but your support is still needed.

It was quite sad to find that the train track, with its station master and rolling stock, was not a part of the entries. The children and many adults asked about it and asked for a return, as it had become a tradition. The station master spent a lot of time talking to people and making them welcome. We hope for a return next year.

St George's Church
www.st-george.org.uk

Services for January 2023

1st 10.30am Said Holy Communion
3rd 2.30pm Tea Service
8th 10.30am Holy Communion
15th 10.30 am Holy Communion
22nd 10.30am Holy Communion
29th 10.30am Holy Communion (Group Service)

Methodist Church

Services for January

1st January at 10.45am
8th January at 10.45am
15th January at 10.45am
22nd January at 10.45am
29th January at 10.45am

Westbury Flower Club

The next meeting is Wednesday 25th January 2023 – Yvonne Berry with 'Tools of the trade'.

Meetings are at Westbury Village Hall starting at 7.30pm.

Following meetings are:

25th February 2023 – Lynn English Bridge flowers - Natures beauty

22nd March 2023 – Louise Jones – Elements

26th April 2023 – Club evening on Leaf manipulation

24th May 2023 – Kath Hones and Betsi Davies – It takes two!

28th June 2023 – Visit

26th July 2023 – Club evening on willow work

23rd August 2023 – Brigette Manton – Brolliology

27th September 2023 – Sally Taylor – Sallying Forth

25th October 2023 – AGM

22 November 2023 – Mark Entwistle – Believe in the Magic

Pontesbury Baptist Church

Chapel Street, SY5 0RJ
www.pontesburybaptist.co.uk

We have services twice every Sunday – at 10:30 am and 6:30 pm

Our services are open to everyone, so you don't have to book ahead or inform anyone you're coming. There's no dress-code, please just come as you are. We have no set or reserved seats, you're welcome to sit wherever, and with whomever, you like.

In addition, every service is streamed live via our website, and recordings of previous sermons are available on our church website and our YouTube channel.

For more information about the wider work of our church, or if you want to get in touch with our Pastor Mike Wells, please use the following email address: info@pontesburybaptist.co.uk

Pontesbury Congregational Church

Services for January

10:00 Sunday 1st Jan - Congregation
10:00 Sunday 8th Jan - Rev. Debbie Martin Communion
10:00 Sunday 15th Jan - Steve Chedgzoy - Operation Mobilisation (OM) Missionary Sunday
10:00 Sunday 22nd January - Rev Debbie Martin
2:30 Sunday 29th January - Rev. Greg Smith - Joint Service at Marton Congregational Church- Week of Prayer



Snowdrop Walk



Saturday 18th February &

Sunday 19th February 10.30am - 4pm at Winsley Hall, Nr Westbury, SY5 9HB

Tea, Coffee & Cake Available

Entrance: Adults £5.00 - Children free

Dogs on Leads Welcome

in aid of Lingen Davies Cancer Fund

Registered Charity No 1160922

Pontesbury & Rea Valley u3a

A very Happy New Year to all, including our u3a members and potential members in Pontesbury and the Rea Valley. The start of a new year is often a time to take a moment to reflect and reset ourselves for the forthcoming year. To our potential members, why not make 2023 the year that you join our wonderful organisation – what better new year's resolution than to develop new skills, activities and knowledge and meet new people.

The u3a organisation is for retired or semi-retired people who want to enrich their minds, bodies and lives amongst like-minded people. It is an international organisation and is extremely vibrant within the UK; there are u3a groups in hundreds of towns and districts across the country with each group being self-supporting and offering activities to suit the membership.

As well as having regular Open Events with speakers we also have over 20 different interest groups, each with its own coordinator. There is something for everyone (well almost) and if we don't have what you fancy, we can probably organise a new group if there is sufficient interest. You can walk, cycle, play table tennis, learn about family or local history, take photographs, play folk music or have a jolly good discussion – and that's only a few of the activities!

The recent lockdowns made us realise how much people, and particularly the more mature amongst us, missed having social contact – and how important that contact is for our physical and mental well-being. Being part of a u3a group can make a real difference to people's lives and you can join in as much or as little as you like – to suit your lifestyle and commitments.

Now is a good time to join our thriving u3a; so why not take that first step and come to an Open meeting, have a look on our website (u3asites.org.uk/pontesbury-reavalley/welcome) or on the u3a notice board in The Pavilion in Pontesbury or get in touch with us to see how to get started. We encourage you to 'try before you buy' before you join. We do limit this to two free taster sessions to one of our Interest Groups. The membership is £15 per annum but each interest group may have their own associated costs e.g. room hire.

Our membership secretary is Steve Anderson (steve.anderson.u3a@gmail.com) and I'm the chair (japa.walsh1@btinternet.com). Send us an email if you want to find out a bit more about us and make 2023 your u3a year.

Janet Walsh, Chair – Pontesbury & Rea Valley District u3a



START UP TENNIS

Members of Longden Tennis Club welcomes all new members.

Would you like 4 free introductory sessions to tennis. Are you a beginner? Or are you returning to the sport? LONGDEN TENNIS CLUB welcomes you!

Hosted by an LTA accredited coach, sessions will be on Sunday mornings throughout January 2023 between 10-11am

For further information please contact Catherine Moss, Club Secretary Catherine.moss4@btinternet.com

ALL ARE WELCOME

Chip it for Charity!

Turn your Christmas Tree into chippings and please make a donation to raise much needed funds for the Community Library in Pontesbury

Saturday 7th January 2023

10.00am to 12.00noon

**Recycling Centre, Station Road,
Pontesbury**

Great for kindling

Reduce, reuse, recycle

Great for the garden



For more info, contact Ben: 07974 300328

Feel strongly about your local area? Want to get involved and make a difference? Why not join your local council - Pontesbury Parish Council.

What is a local council? A parish or local council is the tier of government closest to you as the community and so best able to make a difference at a very local level. Pontesbury Parish Council has five wards – Asterley, Cruckton, Habberley, Plealey and Pontesbury represented by 15 councillors.

Who are the councillors? You, as local residents, choose which local councillors represent you at local elections held every 4 years. You can identify a potential candidate, nominate someone to stand and/or you can vote for the candidate that best represents your interests. If a councillor steps down between elections, then an election can be called by you as electors, or a councillor can be co-opted by other councillors onto the council.

Councillors are first and foremost holders of a public office and there are laws which dictate the conduct expected of someone in such a role, representing the council and the local community. A councillor must declare any financial interests in the parish so that any decisions made by the council can be seen to be fair and transparent.

Pontesbury Ward currently has a vacancy for a parish councillor and so if you, or someone you know, would like to become a councillor please get in touch with one of the existing councillors or the Parish Clerk (contact details below). Unlike other tiers of local government, anyone wanting to be a parish councillor must have been living or working in the parish (or within three miles of it) for the previous twelve months, and so have a good knowledge of the local area. Find out more about the parish councillors currently on the parish council and how to become a councillor at www.pontesburyparishcouncil.org.uk.

What do councils and councillors do? Becoming a councillor is a rewarding experience as you will be able to make a change in your community to help improve residents' lives. A councillor's role can include developing strategies and plans for the area, helping with problems and ideas, representing the community, working with other local community groups, decision making and reviewing decisions and talking to the community about their needs and what the council is doing.

As a councillor your main responsibility is to raise matters that the council can consider and formally take action about at meetings. Each councillor needs to ensure that they are fully informed about any matters to be discussed at a parish council meeting, by reading material and reports from the Clerk and by canvassing views of the residents in their ward. You would come prepared to contribute to council discussion and the final decision. As a councillor you would bring your own unique experience and skills to help the council in its work and Pontesbury Parish Council is committed to training and development of its councillors and staff.

Parish council's can make a massive difference to local people's quality of life as they make decisions about spending money locally (the council budget is raised through income and the precept that is collected within your council tax), management of the services and facilities they are responsible for, working with other organisations and managing parish council staff.

Pontesbury Parish Council have a number of local services and facilities that they are responsible for: The Pavilion community building / The play area / The public toilets / Streetlighting along some roads in Pontesbury / Grounds maintenance of certain areas in Pontesbury / Defibrillators

The parish council is also a consultee for planning applications and have a dedicated Planning Committee who provide comments on all planning applications for the parish.

Currently Pontesbury Parish councillors, responding to local concerns, are involved with:

- activities to mitigate climate change (e.g. increasing biodiversity in the parish green spaces)
- supporting local residents through the cost-of-living crisis (e.g. through information/community events at the Pavilion and community grants)
- Traffic calming working in partnership with Hanwood & Minsterley Parish Councils
- litter reduction projects are also underway working with neighbouring parish councils too


Plans for the future include:

- refurbishment of the play area
- refurbishment of the public toilets
- converting the streetlights to LED to save energy and maintenance costs.

So plenty to get involved with!!


The Parish Council also work closely with partner organisations, including Friends of Pontesbury Library, Pontesbury & Rea Valley Community Good Neighbours Scheme as well as the Pontesbury Climate Emergency Action Group.

Pontesbury Parish Council boasts a very strong team of councillors who are professional, hard-working and committed to making changes to help improve local resident's lives. Come join us and put your energy into making a difference and helping to ensure Pontesbury Parish continues to thrive as a vibrant community with many services and facilities to offer.



Ben Morris Electrical Ltd

ELECTRICAL CONTRACTOR
NAPIT & TRUSTMARK registered



BEN :- 07966 788791
QUOTATIONS:- [JOHN] 01743 792013
www.benmorriselectrical.co.uk

REWIRES / UPDATES
EICR TEST REPORTS / FAULT FINDING
FUSE BOARD UPGRADES
EXTRA SOCKETS / LIGHTS ADDED
ELECTRICAL HEATING SYSTEMS
PART 'P' REGISTERED
COMPETITIVE HOURLY / DAILY RATES
ESTABLISHED 2007
VAT FREE



We offer-

- Care for 3 months to school age children.
- 24U Funding.
- 15/30 Hours Funding.

(All staff are first aid trained)

Please contact us if you would like to enquire about sending your child to our nursery.

Contact number: 01743 791540
 Email: nursery@arkchildcare.co.uk

Rea Valley Probus Club

Meeting Dates:

11th January 2023
 8th February 2023
 8th March 2023

Venue & Time:

White Horse Inn
 at Pulverbatch at
 1pm



Open 5:30pm to 10pm

Special 4 course Banquet Night
Every Sunday £14.95 per person

Buffet Night Tuesdays £14.95 per person

We are closed Mondays except Bank Holidays

Private parties can be catered for,
please ring 07763839775

Lea Cross Tandoori,
Lea Cross, Shrewsbury, Shropshire,
SY5 8HR

Tel: 01743 3860229
Mobile: 07763839775

Website:
www.leacrosstandoori.co.uk

Linda Beal Online Maths Tuition


Working with you to improve your child's grade



- ✓ GCSE & Key Stage 3
- ✓ L2 Further Maths
- ✓ Group Sessions
- ✓ Free half-hour taster session

Mobile: 07581519426
 Address: Asterley, Shrewsbury
 Email: LB.Maths@outlook.com

- ✓ Enhanced DBS
- ✓ PGCE Teaching Qualification
- ✓ DEGREE Maths & Computing
- ✓ L5 Dyscalculia & Maths Difficulties
- ✓ Specialist Teacher for Dyslexia, Dyscalculia & other LD
- ✓ Over 20 years' experience
- ✓ Member of The Tutors' Association



Boiler service, breakdown and installation

Landlord's gas safety certificates

And all plumbing work

Telephone: 07974 268627

email: info@richardhornerplumbingandheating.co.uk

website: richardhornerplumbingandheating.co.uk






Company number 8612915 Vat No. 899 787 414



START UP TENNIS

Members of Longden Tennis Club welcomes all new members.

Would you like 4 free introductory sessions to tennis?

Are you a beginner? Or are you returning to the sport?

LONGDEN TENNIS CLUB welcomes you!

Hosted by an LTA accredited coach, sessions will be on Sunday mornings throughout January 2023 between 10 – 11am.

ALL ARE WELCOME! For further information please contact
 Catherine Moss, Club Secretary Catherine.moss4@btinternet.com



HIGNETT'S of PONTESBURY Ltd.

Established 1919

Retailers of Quality Foods
Fresh Meat, Fruit & Vegetables
Fresh Bread, Pies and Buns

A range of Sausages and Burgers made to our own recipes
Fresh Flowers and Plants
Groceries at Competitive prices



01743 790228 www.hignetts.co.uk



DENTURE PROBLEMS?

Broken? Don't fit? Worn out?

For a fast, professional solution to your denture problems call Neil Phillips. Home visits available.

01743 791 354 or mobile 07946 288412



PLOUGH GARAGE

Established 1919

Servicing & MOTs
Diagnostics
Repairs - Tyres
Air Conditioning

Pontesbury, SY5 0RJ
01743 790270
ploughgarage.co.uk



J.D.E Josh Dyson Electrical

Fully qualified electrician - no job too small

Quality work at competitive prices. Fully insured and vat free

Domestic, industrial, commercial, agricultural, renewable

Please contact 07590 557436 for a free quote or

email: josh@jdelectrical.net

Facebook: Josh Dyson Electrical

Instagram: jdelectrical1



CONNECTIONS PONTESBURY



POST OFFICE



CAFE



CARDS &
BALLOONS



VINTAGE & RETRO

TWO FLOORS TO EXPLORE

OPEN Mon - Fri 9am - 5.30pm

Sat 9am - 1pm

SHREWSBURY ROAD

PONTESBURY

SY5 0QA



Are you feeling overwhelmed,
struggling with negative thoughts
or lacking confidence?

Counselling is for anyone who would
like to experience a change in their
life or to feel listened to.

It really is the ultimate in self care.

Don't wait until you're feeling desperate,
reach out for some support now

I offer a free 20 minute phone session
without obligation.

working from Worthen

Contact Susie

07958 794265

office@presencecounselling.co.uk

www.presencecounselling.co.uk



To advertise in Pontesbury Parish Newsletter, please
contact: deputy@pontesburypc.org.uk

Investment Planning
Retirement Planning
Inheritance Tax
Planning
Intergenerational
Planning
Mortgages

It's important you make
the right decisions.



**lewis wealth
management**

Lewis Wealth Management Ltd is an Appointed Representative of and represents only St. James's Place Wealth Management plc (which is authorised and regulated by the Financial Conduct Authority) for the purpose of advising solely on the Group's wealth management products and services, more details of which are set out on the Group's website www.sjp.co.uk/products. The St. James's Place Partnership and the titles 'Partner' and 'Partner Practice' are marketing terms used to describe St. James's Place representatives.
SJP Approved 25/11/2022

With over 30 years experience, we offer friendly professional advice on a wide range of financial services.

Lewis Wealth Management Limited,
St. James's House, Anchorage Avenue,
Shrewsbury SY2 6FG
Office: 01743 444 700
Mobile: 07967 430 392
Email: Neil.Lewis@sjpp.co.uk
Web: lewiswealthmanagement.co.uk

Your home may be repossessed if you do not keep up repayments on your mortgage.

Partner Practice

**St
James's
Place**

Metal Recycling

Recycle your old scrap metal

- Brass, copper, lead, cable, batteries
- Cast, cars, vans, farm scrap, old central heating systems

Call: 07989 050276
or 01743 791493

Martin Walters
High Quality Traditional Joiner

...

Doors
Sash and Casement Windows
Stairs and Continuous Handrail
Furniture
Arched and Curved work

...

Joinery Repairs
Splicing
Replacement Sash Cording,
Pulleys, Fasteners and
Ironmongery

...

Upgrades
Draught Exclusion
Double Glazing

...

25 years trade experience

...

Free consultation and quote
Telephone: 07813 477720

E-mail:

martin.walters@phonecoop.coop

PHIL GRIFFITHS Local Plumber

Tap Replacement and
Plumbing Repairs undertaken
New Taps supplied and fitted
Full Range available
Established for 35 years
Tel: 01743 790046
Mobile: 07970 010148



Mr Wasp Pest Control Services

- * Professional Local Service
- * Unmarked Vehicle
- * Service Contracts Welcome
- * Rats * Mice * Squirrels
- * Wasps * Fleas * Insects
- * Domestic & Commercial

Tel: 07908 205881

www.mrwasp.biz info@mrwasp.biz

Victoria Wadlow Physiotherapist

Back and neck pain,
headaches, sports
injuries, strength and
conditioning and post
operative
rehabilitation.

PHYSIOTHERAPY
PILATES
ACUPUNCTURE

tors@stoneystrettonphysiotherapy.co.uk t: 07813 912313

Paul Hamer
Pontesbury Handyman

Call: **07497**
Email: pjhamer12@gmail.com



Tiling, fencing, garden services, stone wall repairs, decking and general home maintenance

Door2Door Travel

Local Reliable Driver

6 Seater

PRIVATE HIRE/AIRPORT TRANSFERS

Competitive Rates

Phone Dean 07875016261





**Simplifying Computers
and Technology**
across Shropshire ☎ **01743 790968**
📞 **07971 480036**
✉ **greg@shroptech.com**

Do you still need to upgrade from Windows 7 ? We can

help you upgrade your existing computer to Windows 10 or help you choose a newer one

- Computer repairs • No fix, no fee • Upgrades • SSDs • Security cameras
- Cloud Storage • Data Recovery • Backup Service • Internet / WiFi problems fixed
- We sell 3 grades of Electronics – “New”, “Open Box” or “2nd User”, all min 1yr warranty
- Smart Phones, Tablets, Laptops, Desktops, TVs, Speakers • Backup Service

Shropshire Technology is registered with the ICO for the Data Protection Act 1998 – your data is safe with us



Malehurst Industrial Estate, Malehurst, Pontesbury, SY5 0EQ

Modern Industrial Buildings To Let –
Various Sizes Available

Ideal For Start Up or Existing Businesses

Modern Insulated Units

Self Storage Units & Outside Storage Also Available

Telephone 01743 791744

mark@malehurstindustrialestate.co.uk

www.malehurstindustrialestate.co.uk

Dedicated to providing
you with a friendly,
efficient and professional
legal service

- Civil & Commercial Mediation
- Commercial & Agricultural
- Commercial & Civil Litigation
- Debt Recovery
- Elderly Client & Care Funding
- Employment
- Family Arbitration
- Family Matters
- Family Mediation
- Personal Injury
- Residential Property
- Social Housing & Development
- Wills, Trusts, Tax Planning & Probate



SOLICITORS

21 St Mary's Street | Shrewsbury | SY1 1ED

01743 280 100

www.wacemorgan.co.uk

Wombrook Home Maintenance

Improvements, repairs and maintenance,
in and around the home.

Decorating. Tiling.
Carpentry. Plumbing.
Kitchens. Bathrooms.
Fences.

Odd jobs & more.

All work is fully guaran-
teed and insured.

References willingly supplied – just ask.

Call Steve Percival: 01743 860712
0794 0894 378



Andrew Trow Metalwork

Gates, Railings, Balconies

For all your metal work needs from
design to installation.

Please call 07803 979880

Commercial & Residential Arborcare

Specialising in Sustainable Solutions
for Trees, Hedges and Woodlands
throughout Shropshire.

- ✓ Tree Surgery Services
- ✓ Tree & Hedge Planting
- ✓ Hedge-Laying
- ✓ Orchard Management
- ✓ Woodland Creation
- ✓ Site Clearance
- ✓ Tree Preservation Orders
& Conservation Area Applications



Call: 01743 891 231
07974 300328

Email: info@woodmattersltd.co.uk

treecareshropshire wood_matters_tree_care

www.woodmattersltd.co.uk

JANUARY 2023 DIARY

Date	Time	Event	Venue
Mon-Fri	10am or 11am start	Warm Welcome & Heat Hub - see page 7	various
Every Tue	10-12am	Rea Valley Foodbank	Holy Trinity Minsterley
Every Tue	2-4pm	Tai Chi	Public Hall
Every Thu	10-12am	Rea Valley Foodbank	St George's Church
Every Thu evening	7-9pm	Pontesbury Thursday Night Badminton Club	Mary Webb School
Tue 3 Jan	6.30pm	Planning Committee Meeting	Pavilion
Wed 4 Jan + every Wed	10am - 12	Sea Change Trust - Family Drop-in for under 5s	Pavilion
Thu 5 Jan	11am - 1pm	FREE Getting Creative Morning	Pavilion
Thu 5 Jan + every Thu	7-9pm	Shropshire Woodcarvers Group	Mary Webb School
Sat 7 Jan	10-1200	Chip it for Charity	Recycling Centre, Station Road
Sat 7 Jan	10.30am	Friends of Pontesbury Library Coffee Morning	Pavilion
Sun 8 Jan	10-11am	Start-Up Tennis - every Sun in Jan	Longden Tennis Club
Mon 9 Jan	2pm	Pontesbury WI	Public Hall
Mon 9 Jan	6.30pm	Pontesbury Parish Council Meeting	Pavilion
Tue 10 Jan	7.30pm	Pontesbury Women's Club - Shrewsbury Cat Rescue work	Public Hall
Wed 11 Jan	1pm	Probus Club	White Horse Inn, Pulverbatch
Thu 12 Jan	2pm	Rhymetime for 0-5 years - bring along parents or grandparents	Library in Pavilion
Fri 13 Dec	10.30-12am	Community Good Neighbours Coffee Morning	The Plough Inn
Sat 14 Jan	10am-2pm	Repair Café	St George's Church
Sat 14 Jan	10am-4pm	Shropshire Woodcarvers Group	Mary Webb School
Mon 16 Jan	10am meet	Hedge & Tree Planting	meet outside Pavilion
Mon 16 Jan	6.30pm	Pontesbury Parish Council Pavilion Committee Meeting	Pavilion
Wed 18 Jan	2pm	u3a Open Meeting	Minsterley Parish Hall
Fri 20 Jan	12.30am	Community Good Neighbours Luncheon Club	Public Hall
25-28 January 2023		PANTO	PUBLIC HALL
Fri 27 Jan	10.30am	Carer's Group	Pavilion
Fri 27 Jan	10-11.30am	Community Good Neighbours Pop-Up Larder & Coffee Morning	Minsterley Parish Hall

REMINDER: February Newsletter deadline is 10th January 2023, all info, dates, adverts & articles to deputy@pontesburypc.org.uk please.